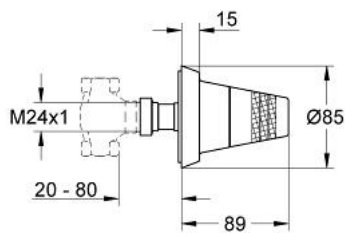


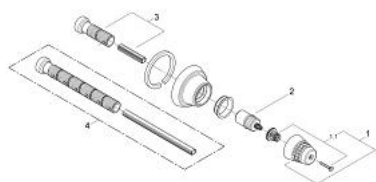
19 209 BK0 GROHE F1 CONCEALED VALVE EXPOSED PART

PRODUCT DESCRIPTION

- with cone handle
- for concealed valves, 1/2", 3/4", 1"
- from 20-80 mm
- threaded sleeve with axial movement compensation
- level regulation for handle gap setting



19 209 BK0 GROHE F1 CONCEALED VALVE EXPOSED PART



SPARE PARTS, Januari 2003 – now

1: Handle (Spare part-nr. 45007BK0)

1.1: Replacement handle connection kit (Spare part-nr. 45011000)

2: Extension (Spare part-nr. 45204000)

3: Extension 20-80 (Spare part-nr. 45202000)

4: Extension 20-200 (Spare part-nr. 45203000)*

* Optional accessories