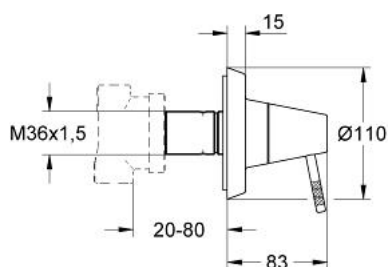


19 211 BK0 GROHE F1 4-WAY DIVERTER

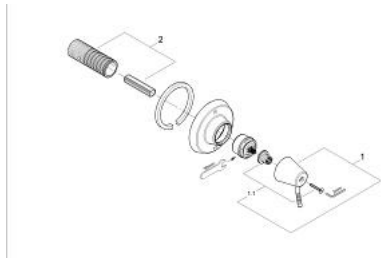


PRODUCT DESCRIPTION

- with lever handle
- without concealed body
- final installation set for 29 707 000
- screw flange
- installation depth adjustable
- from 20-80 mm
- level regulation for handle gap setting



19 211 BK0 **GROHE F1 4-WAY DIVERTER**



SPARE PARTS, September 2002 – spareParts.validDate.now

1: Handle (Order-nr. 45005BK0)

1.1: Replacement handle connection kit (Order-nr. 45011000)

2: Extension (Order-nr. 45439000)