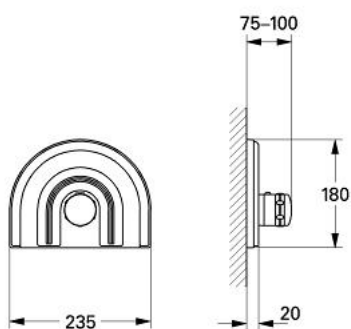


## 19 610 LG0 CHIARA THERMOSTAT

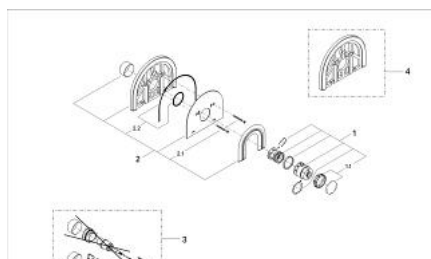


### PRODUCT DESCRIPTION

- final installation set for 34 303/34 305
- without concealed body
- with escutcheon
- temperature scale handle with SafeStop at 38°C
- individual limitable maximum temperature
- escutcheon- and shaft-sealings
- covered screws
- GROHE Long-Life finish



## 19 610 LG0 CHIARA THERMOSTAT



### SPARE PARTS, Januari 1991 – now

- 1: Scale handle (Spare part-nr. 47451LG0)
- 1.1: Cap (Spare part-nr. 47452LG0)
- 2: Flange (Spare part-nr. 47459LG0)
- 2.1: Screw (Spare part-nr. 47460000)
- 2.2: Repl. kit f. seal (Spare part-nr. 47470000)
- 3: Extension-set, 27,5 mm (Spare part-nr. 47461000)\*
- 4: Compensation ring (Spare part-nr. 47462L00)\*

\* Optional accessories