

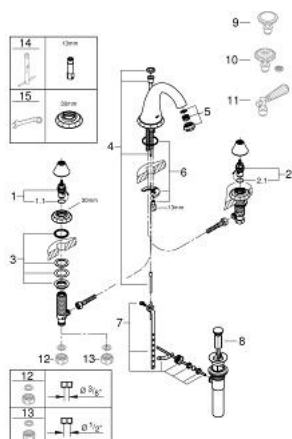
## 20 124 EN0 **KENSINGTON 3-HOLE BASIN MIXER**



### **PRODUCT DESCRIPTION**

- Colour: brushed nickel
- without handles
- mousseur
- side valves
- ceramic headparts 1/2", 90°
- pop-up waste set 1 1/4"
- pressure-proof, flexible connection hoses between spout and side valves
- GROHE Long-Life finish
- round handles 18 086 000 & 18 086 EN0 (sold separately)
- Swarovski crystal handles 18 086 VP0 (sold separately)
- lever handles 18 087 000 & 18 087 EN0 (sold separately)

## 20 124 EN0 KENSINGTON 3-HOLE BASIN MIXER



### SPARE PARTS, Maret 2016 – now

- 1: Ceramic headpart, 1/2" (Spare part-nr. 45882000)
- 1.1: O-ring  $\varnothing 18.2 \times \varnothing 1.7$  (Spare part-nr. 0392400M)
- 2: Ceramic headpart, 1/2" (Spare part-nr. 45883000)
- 2.1: O-ring  $\varnothing 18.2 \times \varnothing 1.7$  (Spare part-nr. 0392400M)
- 3: Shank fastening assembly (Spare part-nr. 45025000)
- 4: Pop-up rod (Spare part-nr. 45875EN0)
- 5: Sistra (Spare part-nr. 13990EN0)
- 6: Shank mounting kit (Spare part-nr. 46249000)
- 7: Ball rod (Spare part-nr. 48332000)
- 9: Crystal handle (Spare part-nr. 18086EN0)\*
- 10: Crystal handle (Spare part-nr. 18086VP0)\*
- 11: Lever Handle (Spare part-nr. 18087EN0)\*
- 12: Coupling nut 1/2" x 10.5 mm (Spare part-nr. 1290100M)\*
- 13: Coupling nut 1/2" x 14.5 mm (Spare part-nr. 1290200M)\*
- 14: Mounting wrench (Spare part-nr. 19017000)\*
- 15: Special spanner (Spare part-nr. 19377000)\*

\* Optional accessories