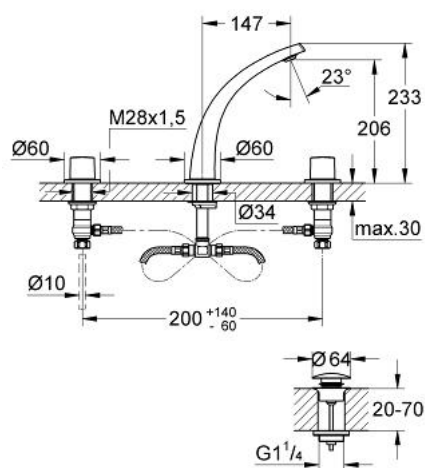


## 20 178 000 GROHE ONDUS 3-HOLE BASIN MIXER S-SIZE

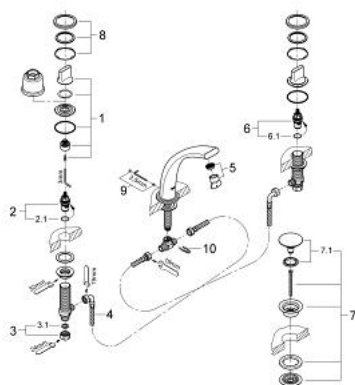


### PRODUCT DESCRIPTION

- Colour: chrome
- ceramic headparts 1/2", 90°
- integrated mousseur
- Push-open waste set 1 1/4"
- pressure-proof, flexible connection hoses between spout and side valves
- click escutcheon
- flow limiter 14 l/min.
- minimum pressure 1,0 bar



## 20 178 000 GROHE ONDUS 3-HOLE BASIN MIXER S-SIZE



### SPARE PARTS, Mei 2008 – now

- 1: Handle (Spare part-nr. 45985000)
- 2: Ceramic headpart, 1/2" (Spare part-nr. 45882000)
- 2.1: O-ring  $\varnothing 18.2 \times \varnothing 1.7$  (Spare part-nr. 0392400M)
- 3: Coupling nut 1/2" x 10.5 mm (Spare part-nr. 1290100M)
- 3.1: Fibre seal dia. 12x2 mm (Spare part-nr. 0138900M)
- 4: Flexible connection hose (Spare part-nr. 45704000)
- 5: Mousseur (Spare part-nr. 48009000)
- 6: Ceramic headpart, 1/2" (Spare part-nr. 45883000)
- 6.1: O-ring  $\varnothing 18.2 \times \varnothing 1.7$  (Spare part-nr. 0392400M)
- 7: Pop-up waste set (Spare part-nr. 65807000)
- 7.1: Nipple (Spare part-nr. 45986000)
- 8: Escutcheon (Spare part-nr. 45999000)
- 9: Fixing set (Spare part-nr. 48003000)
- 10: Fixing clamp (Spare part-nr. 6554100M)