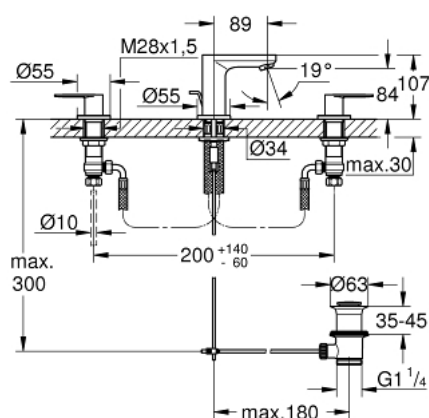


## 20 187 GLC EUROSMART COSMOPOLITAN 3-HOLE BASIN MIXER S-SIZE

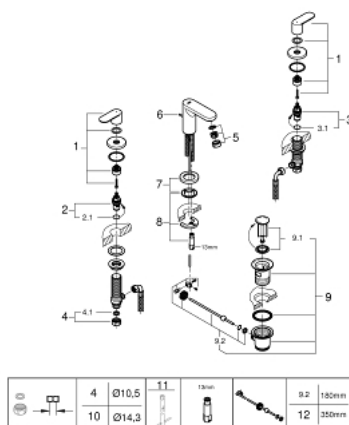


### PRODUCT DESCRIPTION

- Colour: cool sunrise
- metal lever
- ceramic headparts 1/2", 90°
- GROHE Long-Life finish
- GROHE FastFixation installation system with centering support
- spout with mousseur
- pop-up waste set 1 1/4"
- pressure-proof, flexible connection hoses between spout and side valves
- union nut with 10.5 mm drilling



## 20 187 GLC EUROSMART COSMOPOLITAN 3-HOLE BASIN MIXER S-SIZE



### SPARE PARTS, Januari 2023 – now

- 1: Eurosmart Cosmopolitan pair of handles (Spare part-nr. 48306GL0)
- 2: Ceramic headpart, 1/2" (Spare part-nr. 45882000)
- 2.1: O-ring Ø18.2 x Ø1.7 (Spare part-nr. 0392400M)
- 3: Ceramic headpart, 1/2" (Spare part-nr. 45883000)
- 3.1: O-ring Ø18.2 x Ø1.7 (Spare part-nr. 0392400M)
- 4: Coupling nut 1/2" x 10.5 mm (Spare part-nr. 1290100M)
- 4.1: Fibre seal dia. 12x2 mm (Spare part-nr. 0138900M)
- 5: flow control (Spare part-nr. 48159GL0)
- 6: lift rod (Spare part-nr. 46739GL0)
- 7: Shank mounting kit (Spare part-nr. 46671000)
- 8: Pop-up waste set 1 1/4" (Spare part-nr. 28910GL0)
- 8.1: Plug (Spare part-nr. 07182GL0)
- 8.2: Eccentric rod (Spare part-nr. 07052000)
- 9: Coupling nut 1/2" x 14.5 mm (Spare part-nr. 1290200M)\*
- 10: Mounting wrench (Spare part-nr. 19017000)\*
- 11: Eccentric rod (Spare part-nr. 07341000)\*
- \* Optional accessories