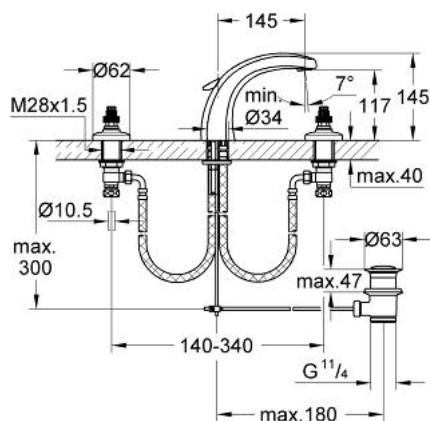


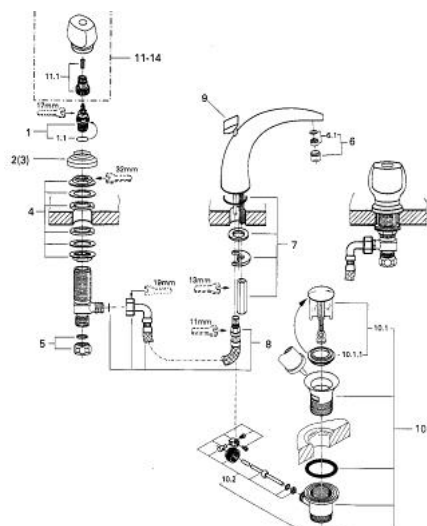
## 20 613 L00 FLORIDA 3-HOLE BASIN MIXER



### PRODUCT DESCRIPTION

- Colour: white
- ceramic headparts 1/2", 180°
- cast spout with Mousseur
- pressure-proof, flexible connection hoses
- pressure-proof, flexible connection hoses between middle-body and side valves
- union nut with 10.5 mm drilling
- pop-up waste set 1 1/4"
- without handles
- for handles, see product no. 18 956, 18 996, 18 997
- 18 993
- GROHE Long-Life finish

## 20 613 L00 FLORIDA 3-HOLE BASIN MIXER



### SPARE PARTS, Januari 1989 – now

- 1: Ceramic headpart, 1/2" (Spare part-nr. 45346000)
- 1.1: O-ring  $\varnothing 18.2 \times \varnothing 1.7$  (Spare part-nr. 0392400M)
- 2: Flange dia. 62 mm (Spare part-nr. 45223L00)
- 3: Flange dia. 52 mm (Spare part-nr. 45224L00)
- 4: Shank fastening assembly (Spare part-nr. 45025000)
- 5: Coupling nut 1/2" x 10.5 mm (Spare part-nr. 1290100M)
- 5.1: Fibre seal dia. 12x2 mm (Spare part-nr. 0138900M)
- 6: Mousseur (Spare part-nr. 13929L00)
- 6.1: Repl.kit f.Mousseur M22x1 and M24x1 (Spare part-nr. 45002000)
- 7: Shank mounting kit (Spare part-nr. 45226000)
- 8: Flexible hose (Spare part-nr. 45461000)
- 9: Pop-up rod (Spare part-nr. 45177L00)
- 10: Pop-up waste set 1 1/4" (Spare part-nr. 28910L00)
- 10.1: Plug (Spare part-nr. 07182L00)
- 10.1.1: Ball seal dia. 9x6.8 mm (Spare part-nr. 0506500M)
- 10.2: Eccentric rod (Spare part-nr. 07052000)
- 11: Replacement handle connection kit (Spare part-nr. 45186000)
- 11.1: O-ring  $\varnothing 18.2 \times \varnothing 1.7$  (Spare part-nr. 0392400M)
- 12: Florida handle 100 (Spare part-nr. 45180L00)\*
- 13: Florida handle 115 (Spare part-nr. 45230L00)\*
- 14: Florida handle 500 (Spare part-nr. 45206L00)\*
- 15: Florida handle 510 (Spare part-nr. 45207L00)\*
- \* Optional accessories