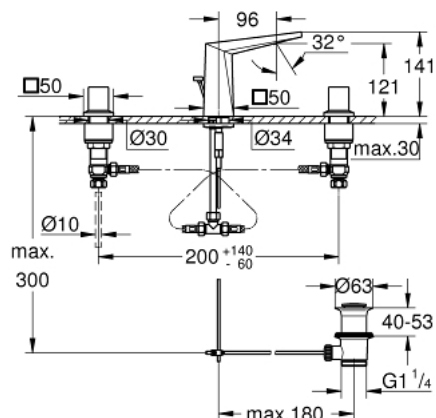


20 626 DC0 **ALLURE BRILLIANT 3-HOLE BASIN MIXER** **M-SIZE**

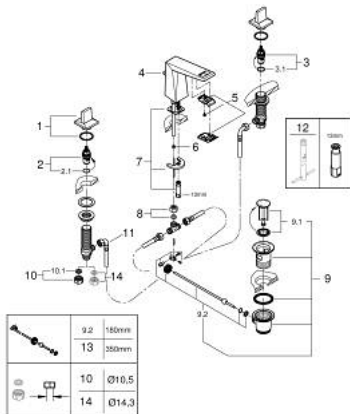


PRODUCT DESCRIPTION

- Colour: Supersteel
- ceramic headparts 1/2", 90°
- GROHE Long-Life finish
- GROHE Water Saving - Less water, perfect flow
- maximum flow rate (at 3 bar): 5 l/min
- low spout with integrated mousseur
- pop-up waste set 1 1/4"
- pressure-proof, flexible connection hoses between spout and side valves
- minimum pressure 1,0 bar



20 626 DC0 ALLURE BRILLIANT 3-HOLE BASIN MIXER M-SIZE



SPARE PARTS, Oktober 2021 – now

- 1: Handle pair (Spare part-nr. 48320DC0)
- 2: Ceramic headpart, 1/2" (Spare part-nr. 45882000)
- 2.1: O-ring $\varnothing 18.2 \times \varnothing 1.7$ (Spare part-nr. 0392400M)
- 3: Ceramic headpart, 1/2" (Spare part-nr. 45883000)
- 3.1: O-ring $\varnothing 18.2 \times \varnothing 1.7$ (Spare part-nr. 0392400M)
- 4: Pop-up rod (Spare part-nr. 46787DC0)
- 5: Race (Spare part-nr. 46794DC0)
- 6: Flow limiter (Spare part-nr. 48160000)
- 7: Shank mounting kit (Spare part-nr. 46671000)
- 8: Compression union 3/8" (Spare part-nr. 12914000)
- 8.1: Ball seal dia. 9x6.8 mm (Spare part-nr. 45279000)
- 9: Pop-up waste set 1 1/4" (Spare part-nr. 28910DC0)
- 9.1: Plug (Spare part-nr. 07182DC0)
- 9.2: Eccentric rod (Spare part-nr. 07052000)
- 10: Coupling nut 1/2" x 10.5 mm (Spare part-nr. 1290100M)
- 10.1: Fibre seal dia. 12x2 mm (Spare part-nr. 0138900M)
- 11: Flexible connection hose (Spare part-nr. 45704000)
- 12: Mounting wrench (Spare part-nr. 19017000)*
- 13: Eccentric rod (Spare part-nr. 07341000)*
- 14: Coupling nut 1/2" x 14.5 mm (Spare part-nr. 1290200M)*
- 14.1: Fibre seal dia. 12x2 mm (Spare part-nr. 0138900M)

* Optional accessories