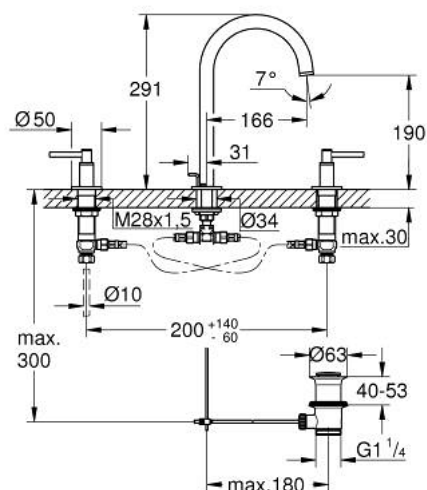


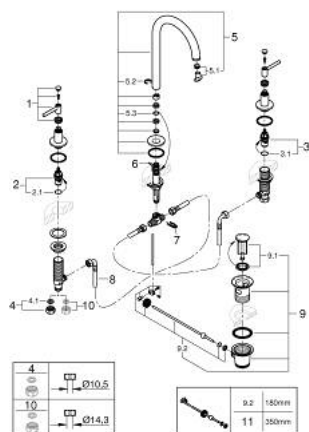
20 649 DL0 ATRIO 3-HOLE BASIN MIXER L-SIZE



PRODUCT DESCRIPTION

- Colour: brushed warm sunset
- ceramic headparts 1/2", 90°
- GROHE Long-Life finish
- GROHE Water Saving - Less water, perfect flow
- maximum flow rate (at 3 bar): 5 l/min
- swivelling tubular spout with Mousseur and stop limiter
- adjustable swivel area 0° / 150° / 360°
- pop-up waste set 1 1/4"
- flexible connection hoses between spout and side valves
- with lever handles
- Two different sets of caps included. One set with "H" and "C" marking, one set without marking.

20 649 DL0 ATRIO 3-HOLE BASIN MIXER L-SIZE



SPARE PARTS, November 2022 – now

- 1: Lever handles (Spare part-nr. 14216DL0)
- 2: Ceramic headpart, 1/2" (Spare part-nr. 45882000)
- 2.1: O-ring $\varnothing 18.2 \times \varnothing 1.7$ (Spare part-nr. 0392400M)
- 3: Ceramic headpart, 1/2" (Spare part-nr. 45883000)
- 3.1: O-ring $\varnothing 18.2 \times \varnothing 1.7$ (Spare part-nr. 0392400M)
- 4: Coupling nut 1/2" x 10.5 mm (Spare part-nr. 1290100M)
- 4.1: Fibre seal dia. 12x2 mm (Spare part-nr. 0138900M)
- 5: Spout (Spare part-nr. 101298DL00)
- 5.1: Flow straightener (Spare part-nr. 48408000)
- 5.2: Safety ring (Spare part-nr. 4826600M)
- 5.3: Sealing washer (Spare part-nr. 0128500M)
- 6: Pop-up rod (Spare part-nr. 65196DL0)
- 7: Fixing clamp (Spare part-nr. 6554100M)
- 8: Flexible connection hose (Spare part-nr. 45704000)
- 9: waste set basin 1 1/4" (Spare part-nr. 28910DL0)
- 9.1: Plug (Spare part-nr. 07182DL0)
- 9.2: Eccentric rod (Spare part-nr. 07052000)
- 10: Coupling nut 1/2" x 14.5 mm (Spare part-nr. 1290200M)*
- 11: Eccentric rod (Spare part-nr. 07341000)*

* Optional accessories