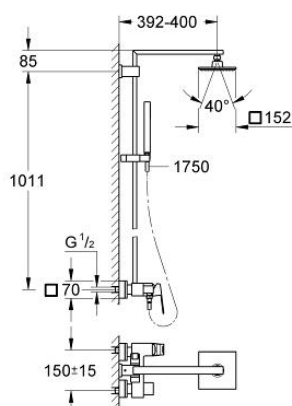


23 147 000 EUROCUBE SYSTEM 150 SHOWER SYSTEM WITH SINGLE LEVER MIXER FOR WALL MOUNTING

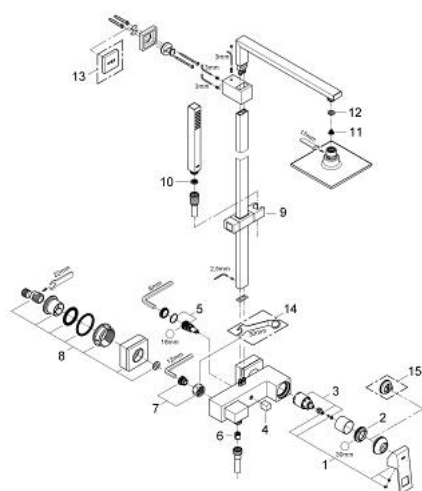


PRODUCT DESCRIPTION

- Colour: chrome
- consists of:
- shower arm
- projection 378 mm
- Exposed single-lever shower mixer with diverter
- allows change between:
- head shower Euphoria Cube 152 mm x 152 mm
- spray pattern: Rain
- with ball joint
- rotation angle $\pm 20^\circ$
- GROHE Water Saving - Less water, perfect flow
- hand shower Euphoria Cube Stick (27 698 000)
- adjustable in height with gliding element
- shower hose Silverflex 1750 mm 1/2" x 1/2" (28 388)
- minimum flow rate 7 l/min.
- GROHE DreamSpray perfect spray pattern
- GROHE Long-Life finish
- GROHE SilkMove
- SpeedClean anti-lime system
- suitable for instantaneous heaters (min. 19 kW/h)
- minimum pressure 1,0 bar



23 147 000 EUROCUBE SYSTEM 150 SHOWER SYSTEM WITH SINGLE LEVER MIXER FOR WALL MOUNTING



SPARE PARTS, September 2010 – now

- 1: Lever (Spare part-nr. 46782000)
- 2: Screw coupling (Spare part-nr. 46460000)
- 3: Cartridge (Spare part-nr. 46374000)
- 4: Diverter knob (Spare part-nr. 48128000)
- 5: Diverter (Spare part-nr. 48178000)
- 6: Non-return valve (Spare part-nr. 08565000)
- 7: Screw joint (Spare part-nr. 45044000)
- 8: S-union (Spare part-nr. 47824000)
- 9: Sliding piece (Spare part-nr. 48180000)
- 10: Dirt strainer (Spare part-nr. 0700200M)
- 11: Dirt strainer (Spare part-nr. 0676800M)
- 12: Fibre seal dia. 12x2 mm (Spare part-nr. 0138900M)
- 13: Compensation disc (Spare part-nr. 27933000)*
- 14: Special spanner (Spare part-nr. 19377000)*
- 15: Temperature limiter (Spare part-nr. 46375000)*

* Optional accessories