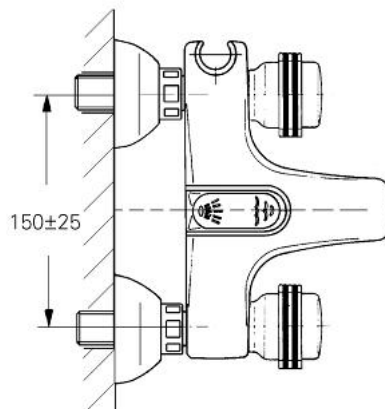
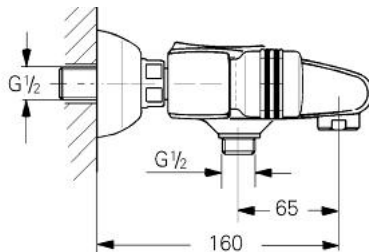


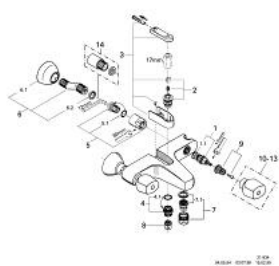
25 610 000 **FLORIDA BATH/SHOWER MIXER**



PRODUCT DESCRIPTION

- Colour: chrome
- wall mounted
- ceramic headparts 1/2", 180°
- automatic pushbutton diverter
- bath/shower
- integrated handspray holder
- mousseur
- S-unions
- without handles
- shower outlet 1/2"
- for handles, see product no.18 956, 18 996, 18 997
- GROHE Long-Life finish

25 610 000 FLORIDA BATH/SHOWER MIXER



25.610

SPARE PARTS, Januari 1984 – now

- 1: Ceramic headpart, 1/2" (Spare part-nr. 45346000)
- 1.1: O-ring $\varnothing 18.2 \times \varnothing 1.7$ (Spare part-nr. 0392400M)
- 2: Diverter (Spare part-nr. 45187000)
- 3: Rocker switch (Spare part-nr. 45188000)
- 4: Outlet nipple (Spare part-nr. 45487000)
- 4.1: O-ring $\varnothing 21 \times \varnothing 2$ (Spare part-nr. 0599900M)
- 5: Screw joint (Spare part-nr. 45185000)
- 5.1: Seal dia. 15x2 mm (Spare part-nr. 0311900M)
- 6: S-union (Spare part-nr. 12083000)
- 6.1: Flange (Spare part-nr. 45184000)
- 6.2: Ball seal dia. 9x6.8 mm (Spare part-nr. 0138600M)
- 7: Mousseur (Spare part-nr. 13927000)
- 7.1: Repl.kit f.aerator M28x1 (Spare part-nr. 45029000)
- 8: Non-return valve (Spare part-nr. 08565000)
- 9: Replacement handle connection kit (Spare part-nr. 45186000)
- 9.1: O-ring $\varnothing 18.2 \times \varnothing 1.7$ (Spare part-nr. 0392400M)
- 10: Handle (Spare part-nr. 45180000)*
- 11: Florida handle 115 (Spare part-nr. 45230000)*
- 12: Florida handle 500 (Spare part-nr. 45206000)*
- 13: Florida handle 510 (Spare part-nr. 45207000)*
- 14: Controecon Extension, 40mm (Spare part-nr. 45268000)*

* Optional accessories