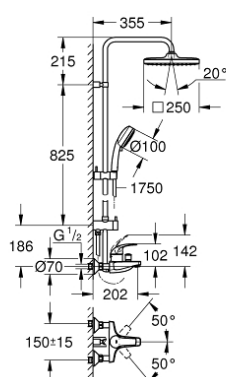


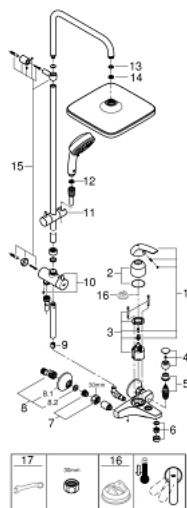
## 26 693 000 TEMPESTA COSMOPOLITAN SYSTEM 250 CUBE SHOWER SYSTEM WITH SINGLE LEVER BATH MIXER FOR WALL MOUNTING



### PRODUCT DESCRIPTION

- Colour: chrome
- with short shower rail for installation in showers
- consists of:
- horizontal 355 mm shower arm
- exposed single-lever bath mixer with diverter handle
- allows change between:
- head shower Tempesta 250 Cube (26 685)
- spray pattern:
- Rain
- head shower with white rear cover
- with ball joint
- rotation angle  $\pm 10^\circ$
- GROHE Water Saving 9.5 l/min flow limiter
- bath spout
- separate diverter for hand shower
- hand shower Tempesta Cosmopolitan 100 (27 575)
- 4 spray patterns
- GROHE Rain O<sup>2</sup>, Rain, Massage, Jet
- GROHE Water Saving 9.5 l/min flow limiter
- adjustable in height with gliding element
- Rotaflex TwistStop shower hose 1750 mm 1/2" x 1/2" 28 410
- GROHE Water Saving - Less water, perfect flow
- GROHE SilkMove 46 mm ceramic cartridge
- GROHE DreamSpray perfect spray pattern
- GROHE Long-Life finish
- SpeedClean anti-lime system
- Inner WaterGuide for a longer life
- TwistStop (to prevent hose from twisting)
- suitable for instantaneous heaters (min. 19 kW/h)
- minimum flow rate 7 l/min.
- minimum pressure 1,0 bar
- professional edition

## 26 693 000 TEMPESTA COSMOPOLITAN SYSTEM 250 CUBE SHOWER SYSTEM WITH SINGLE LEVER BATH MIXER FOR WALL MOUNTING



### SPARE PARTS, Februari 2019 – now

- 1: Lever (Spare part-nr. 46700000)
- 2: Shield (Spare part-nr. 46578000)
- 3: Cartridge (Spare part-nr. 46048000)
- 4: Diverter knob (Spare part-nr. 46571000)
- 5: Diverter (Spare part-nr. 08915000)
- 6: Mousseur (Spare part-nr. 13952000)
- 7: Screw joint (Spare part-nr. 45044000)
- 8: S-union (Spare part-nr. 12075000)
- 8.1: Ball seal dia. 9x6.8 mm (Spare part-nr. 0138600M)
- 8.2: Escutcheon (Spare part-nr. 0221000M)
- 9: Non-return valve (Spare part-nr. 08565000)
- 10: Diverter (Spare part-nr. 46877000)
- 11: Sliding piece (Spare part-nr. 46876000)
- 12: Dirt strainer (Spare part-nr. 0700200M)
- 13: Fibre seal dia. 12x2 mm (Spare part-nr. 0138900M)
- 14: Dirt strainer (Spare part-nr. 48007000)
- 15: Mounting set (Spare part-nr. 46878000)
- 16: Temperature limiter (Spare part-nr. 46375000)\*
- 17: Special spanner (Spare part-nr. 19377000)\*

\* Optional accessories