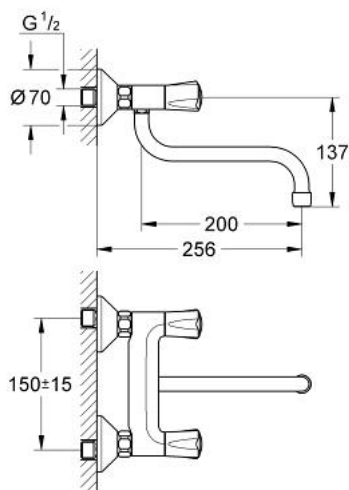


## 31 066 000 AVINA TWO HANDLE SINK MIXER

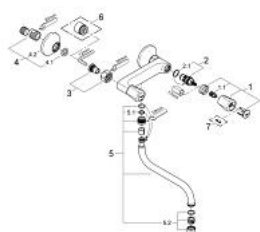


### PRODUCT DESCRIPTION

- Colour: chrome
- wall mounted
- metal handles
- heat-insulated
- screwable
- ceramic headpart 1/2", 180°
- projection 203 mm
- swivelling spout
- S-unions
- mousseur
- GROHE Long-Life finish



## 31 066 000 AVINA TWO HANDLE SINK MIXER



### SPARE PARTS, Juni 2007 – now

- 1: handle Atlanta (Spare part-nr. 45993000)
  - 1.1: Repl. kit f.handle fastening (Spare part-nr. 0538600M)
  - 2: Ceramic headpart, 1/2" (Spare part-nr. 45346000)
  - 2.1: O-ring  $\varnothing 18.2 \times \varnothing 1.7$  (Spare part-nr. 0392400M)
  - 3: Screw joint (Spare part-nr. 45544000)
  - 4: S-union (Spare part-nr. 12075000)
  - 4.1: Ball seal dia. 9x6.8 mm (Spare part-nr. 0138600M)
  - 4.2: Escutcheon (Spare part-nr. 0221000M)
  - 5: Swivel tube spout (Spare part-nr. 13051000)
  - 5.1: O-ring dia. 12x2 mm (Spare part-nr. 0128000M)
  - 5.2: Mousseur (Spare part-nr. 13928000)
  - 6: Extension 3/4", 20 mm (Spare part-nr. 0713000M)\*
  - 7: Screw for Costa/Avina products (Spare part-nr. 48013000)\*
- \* Optional accessories