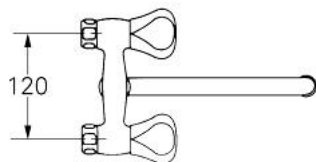
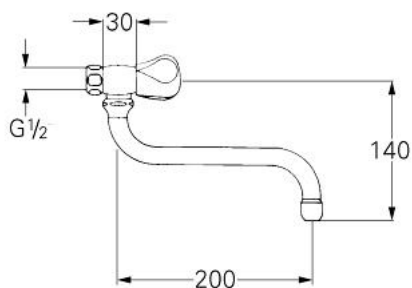


31 163 000 **ATLANTA WALL MOUNTED SINK MIXER**

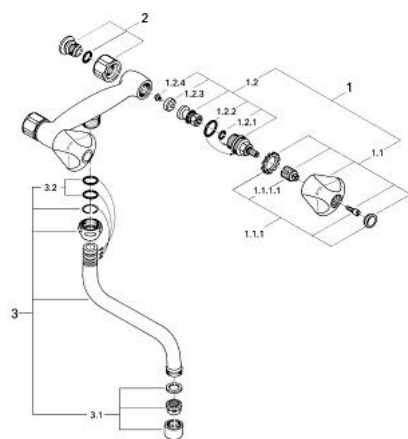


PRODUCT DESCRIPTION

- Colour: chrome
- Treflor-handles
- GROHE Long-Life headpart
- GROHE Long-Life finish
- swivelling tubular spout
- mousseur
- S-unions



31 163 000 ATLANTA WALL MOUNTED SINK MIXER



SPARE PARTS, Januari 1981 – now

- 1: Headpart 1/2" (Spare part-nr. 11086000)
- 1.1: Treflor handle blue/red (Spare part-nr. 45124000)
- 1.1.1: Handle fixation (Spare part-nr. 45123000)
- 1.1.1.1: Repl. kit f.handle fastening (Spare part-nr. 0538600M)
- 1.2: Headpart 1/2" (Spare part-nr. 07146000)
- 1.2.1: O-ring $\varnothing 6 \times \varnothing 2$ (Spare part-nr. 0128300M)
- 1.2.2: O-ring $\varnothing 18.2 \times \varnothing 1.7$ (Spare part-nr. 0392400M)
- 1.2.3: Ball seal dia. 9x6.8 mm (Spare part-nr. 0529100M)
- 2: Screw joint (Spare part-nr. 45454000)
- 3: Swivel tube spout (Spare part-nr. 13084000)
- 3.1: Mousseur (Spare part-nr. 13928000)
- 3.2: Sealing washer (Spare part-nr. 0128500M)