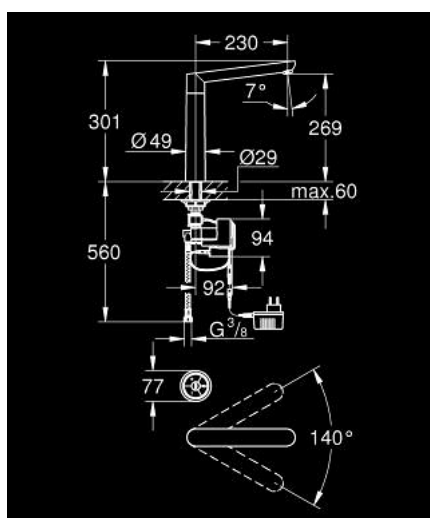


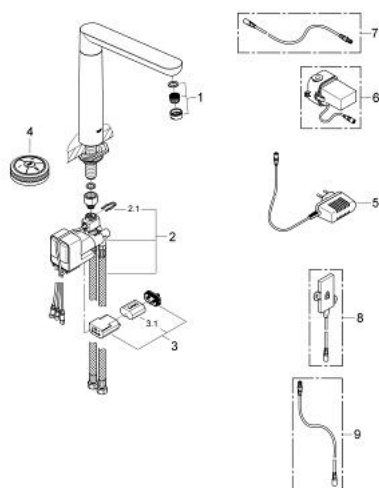
## 31 247 000 GROHE K7 F-DIGITAL GROHE K7 DIGITAL DIGITAL SINK MIXER



### PRODUCT DESCRIPTION

- Colour: chrome
- including digital mixing device
- single hole installation
- - Temperature and flow control
- - Memory-function
- - LED-ring
- Digital mixing device
- - digital controlled valves
- - integrated temperature sensor
- Default setting configurable during installation:
- - automatic safety shut-off after 60 sec
- - integrated temperature sensor
- default setting configurable during installation:
- - automatic safety shut-off after 60 sec.
- swivelling cast spout
- swivel area 140°
- SpeedClean Mousseur
- flexible connection hoses
- incl. plug power supply 65 790 000
- requires built-in power supply 36 078 000
- minimum pressure 1,0 bar

## 31 247 000 GROHE K7 F-DIGITAL GROHE K7 DIGITAL DIGITAL SINK MIXER



### SPARE PARTS, Juli 2010 – now

- 1: Mousseur (Spare part-nr. 48173000)
- 2: mixing device (Spare part-nr. 48163000)
- 2.1: Fixing clamp (Spare part-nr. 6554100M)
- 3: Battery housing with battery (Spare part-nr. 42393000)
- 3.1: Battery (Spare part-nr. 42886000)
- 4: Digital controller
- Remote controller for bath or shower (Spare part-nr. 36309000)
- 5: Plug power supply 230 V (Spare part-nr. 65790000)
- 6: Plug power supply 110-240 V (Spare part-nr. 36078000)\*
- 7: connection wire (Spare part-nr. 47727000)\*
- 8: Transceiver (Spare part-nr. 36356000)\*
- 9: connection wire (Spare part-nr. 65815000)\*

\* Optional accessories