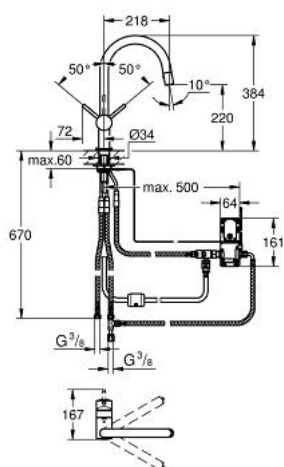


31 358 DC0 MINTA TOUCH ELECTRONIC SINGLE-LEVER SINK MIXER 1/2"



PRODUCT DESCRIPTION

- Colour: Supersteel
- single hole installation
- Touch: activation of cold water via skin contact
- battery power supply 6 V,lithium-battery, type CR-P2
- CE approved
- indication of battery status by different impulses
- safety shutdown circuit
- solenoid valve
- automatic safety stop 60 sec.(factory pre-set)
- type of protection IP 44
- GROHE Long-Life finish
- GROHE SilkMove 46 mm ceramic cartridge
- C-spout
- adjustable flow rate limiter
- swivelling tubular spout
- selectable swivel area : 0° / 150° / 360°
- pull-out mousseur spray
- automatic returning
- integrated non-return valve
- diverter: mousseur/shower jet
- automatic reverse to mousseur
- flexible connection hoses
- rapid-installation-system
- Protected against backflow
- optional:
 - upgrade for Touch function with mixed water:
 - Grohtherm Micro 34 487 000
 - connection set 47 533 000
 - minimum pressure 1,0 bar

31 358 DC0 MINTA TOUCH ELECTRONIC SINGLE-LEVER SINK MIXER 1/2"



SPARE PARTS, September 2013 – now

- 1: Lever (Spare part-nr. 46015DC0)
- 2: Shield (Spare part-nr. 46025DC0)
- 3: Cartridge (Spare part-nr. 46048000)
- 4: Hand shower (Spare part-nr. 46857DC0)
- 4.1: Non-return valve (Spare part-nr. 08565000)
- 4.2: Flow straightener (Spare part-nr. 13997000)
- 5: Shower hose (Spare part-nr. 46881000)
- 6: Shank mounting kit (Spare part-nr. 46345000)
- 7: Non-return valve (Spare part-nr. 08565000)
- 8: Snap coupling (Spare part-nr. 46338000)
- 9: Solenoid valve (Spare part-nr. 48213000)
- 9.1: Non-return valve (Spare part-nr. 08565000)
- 9.2: Dirt strainer (Spare part-nr. 42395000)
- 10: Control unit (Spare part-nr. 48214000)
- 11: Battery (Spare part-nr. 42886000)
- 12: Original WAS[®] T-piece 3/8" (Spare part-nr. 41007000)
- 13: Connection set (Spare part-nr. 47533000)*
- 14: Thermo scalding protection (Spare part-nr. 34487000)*
- 15: Lever (Spare part-nr. 40684DC0)*

* Optional accessories