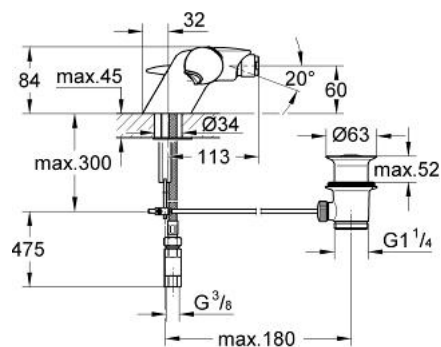


## 34 200 IS0 Taron THERMOSTAT SINGLE-HOLE BIDET MIXER 1/2"

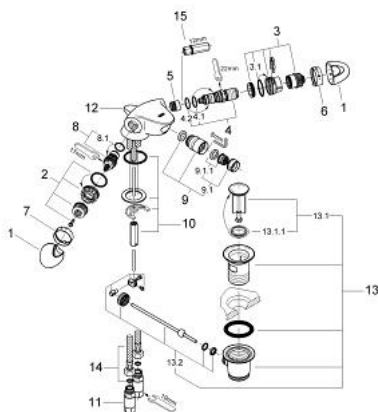


### PRODUCT DESCRIPTION

- single hole installation
- ceramic headpart 1/2", 180°
- wax thermo-element
- maximum temperature stop at 43°C
- ball-joint mousseur
- pop-up waste set 1 1/4"
- flexible connection hoses
- rapid-installation-system



## 34 200 ISO **TARON THERMOSTAT SINGLE-HOLE BIDET MIXER 1/2"**



### **SPARE PARTS**, Januari 1998 – now

- 1: Handle (Spare part-nr. 47515IS0)
- 2: Fixing set (Spare part-nr. 47516000)
- 3: Stop ring + regulating nut (Spare part-nr. 47517000)
- 3.1: O-ring (Spare part-nr. 45583000)
- 4: Thermoelement 3/8" (Spare part-nr. 47349000)
- 4.1: O-ring  $\varnothing 15 \times \varnothing 2,5$  (Spare part-nr. 0012300M)
- 4.2: O-ring  $\varnothing 16 \times \varnothing 1,25$  (Spare part-nr. 0122500M)
- 5: Seat for thermostat (Spare part-nr. 02406000)
- 6: Scale ring (Spare part-nr. 09428000)
- 7: Sleeve (Spare part-nr. 01983000)
- 8: Ceramic headpart, 1/2" (Spare part-nr. 45882000)
- 8.1: O-ring  $\varnothing 18,2 \times \varnothing 1,7$  (Spare part-nr. 0392400M)
- 9: Ball-joint Mousseur (Spare part-nr. 13912000)
- 9.1: Mousseur (Spare part-nr. 13929000)
- 9.1.1: Repl.kit f.Mousseur M22x1 and M24x1 (Spare part-nr. 45002000)
- 10: Shank mounting kit (Spare part-nr. 46122000)
- 11: Non-return valve (Spare part-nr. 47518000)
- 12: Pop-up rod (Spare part-nr. 46376000)
- 13: Pop-up waste set 1 1/4" (Spare part-nr. 28910000)
- 13.1: Plug (Spare part-nr. 07182000)
- 13.2: Eccentric rod (Spare part-nr. 07052000)
- 14: Connection hose (Spare part-nr. 46255000)\*
- 15: Socket spanner (Spare part-nr. 19070000)\*

\* Optional accessories