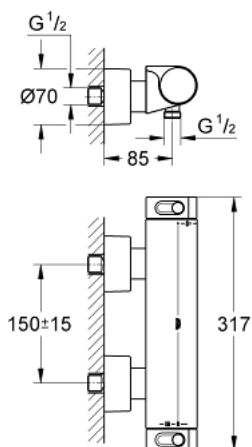


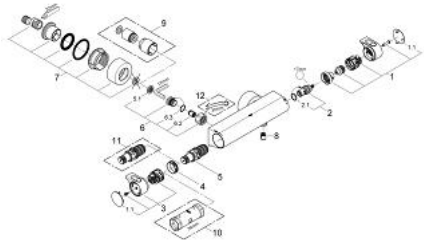
## 34 446 001 GROHTHERM 2000 THERMOSTAT SHOWER MIXER



### PRODUCT DESCRIPTION

- Colour: chrome
- wall mounted
- 100% GROHE CoolTouch consisting of safety housing + S-unions with CoolTouch escutcheons
- GROHE Long-Life finish
- GROHE Aqua Paddles, ergonomically shaped handles
- GROHE SafeStop at 38°C
- GROHE SafeStop Plus integrated temperature limiter at max 50°C
- GROHE TurboStat compact cartridge with wax thermoelement
- integrated mixed water shut off
- volume handle with EcoButton (economy button with individually adjustable economy stop)
- ceramic headpart 1/2", 180°
- shower outlet below 1/2"
- built-in non return valves
- dirt strainers
- Protected against backflow
- covered S-unions, CoolTouch escutcheons with wall sealing
- optional upgrade: GROHE EasyReach shower tray (18 608 001)
- GROHE Water Saving - Less water, perfect flow
- integrated flow limiter 14 l/min in the shower outlet

## 34 446 001 GROHTHERM 2000 THERMOSTAT SHOWER MIXER



### SPARE PARTS, Februari 2012 – now

- 1: Shut-off handle Aqua Paddle (Spare part-nr. 47916000)
  - 1.1: Cap (Spare part-nr. 4788300M)
  - 2: Ceramic headpart, 1/2" (Spare part-nr. 45346000)
  - 2.1: O-ring  $\varnothing 18.2 \times \varnothing 1.7$  (Spare part-nr. 0392400M)
  - 3: Temperature control handle (Spare part-nr. 47926000)
  - 4: Fitting ring (Spare part-nr. 47743000)
  - 5: Thermostatic compact cartridge 1/2" (Spare part-nr. 47885000)
  - 6: Non-return valve (Spare part-nr. 47189000)
  - 6.1: Dirt Strainer (Spare part-nr. 0726400M)
  - 6.2: Non-return valve (Spare part-nr. 08565000)
  - 6.3: O-ring  $\varnothing 17 \times \varnothing 2$  (Spare part-nr. 0305500M)
  - 7: S-union (Spare part-nr. 12693000)
  - 8: Non-return valve (Spare part-nr. 47886000)
  - 9: Extension set 1/2", 30 mm (Spare part-nr. 46238000)\*
  - 10: Socket spanner (Spare part-nr. 19332000)\*
  - 11: GROHE TurboStat cartridge 1/2" (Spare part-nr. 47175000)\*
  - 12: Special spanner (Spare part-nr. 19377000)\*
- \* Optional accessories