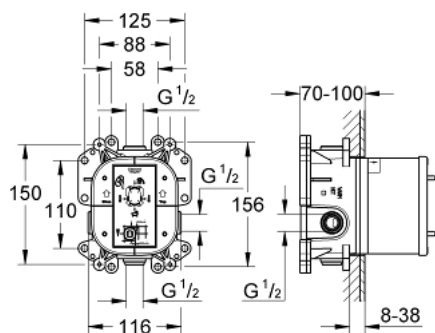


## 35 501 000 GROHE RAPIDO E UNIVERSAL SINGLE-LEVER MIXER FOR CONCEALED INSTALLATION

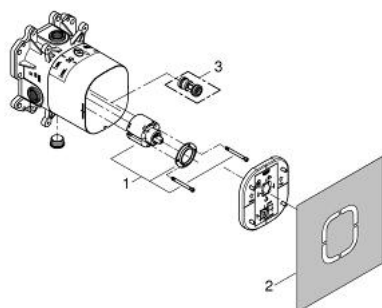


### PRODUCT DESCRIPTION

- for use with bath- and shower-mixer
- without finishing trim set
- flat installation depth 70 - 100 mm
- easy to install, premounted and tested unit
- GROHE SilkMove 46 mm ceramic cartridge
- adjustable flow rate limiter
- safe to install, stable built-in-box and protective cap
- fixation options for solid walls and dry cladding
- wall sealing
- all connectors 1/2", with identification marking
- diverter for bath-mixer in finishing trim set
- body made of DR brass
- noise classification 1 in accordance with DIN4109
- minimum pressure 1,0 bar



## 35 501 000 GROHE RAPIDO E UNIVERSAL SINGLE-LEVER MIXER FOR CONCEALED INSTALLATION



### SPARE PARTS, April 2006 – now

1: Cartridge (Spare part-nr. 46048000)

2: Repl. kit f. seal (Spare part-nr. 48263000)

3: Safety combination (DIN EN 1717) (Spare part-nr. 29008000)\*

\* Optional accessories