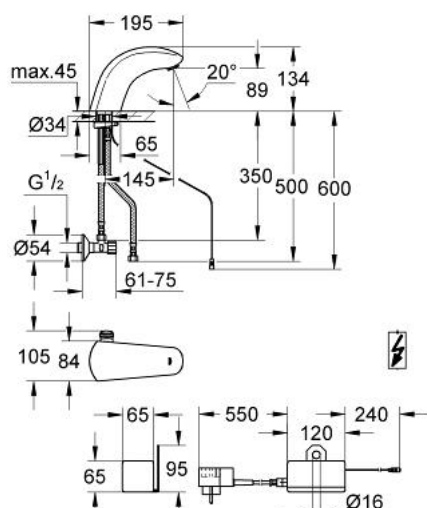


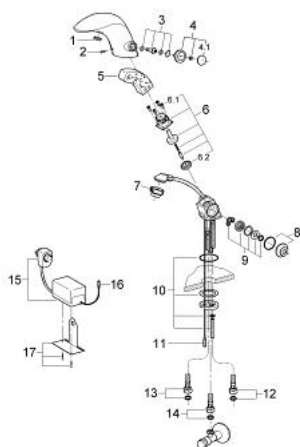
## 36 146 000 PULSOMAT SURF RADAR-ELECTRONIC BASIN MIXER 1/2" WITH MIXING DEVICE



### PRODUCT DESCRIPTION

- Colour: chrome
- for open water heater
- single hole installation
- tap hole diameter 35 mm
- connection voltage 24 V
- solenoid valve
- flow straightener
- 3 flexible connection hoses
- 1 angle valve
- power supply unit for plug and socket connection
- connection voltage 230 V, 50 Hz, 7,5 VA
- operating tension 24 V
- type of protection IP 44
- CE approved
- GROHE Long-Life finish

## 36 146 000 PULSOMAT SURF RADAR-ELECTRONIC BASIN MIXER 1/2" WITH MIXING DEVICE



### SPARE PARTS, Januari 1995 – now

- 1: Cap (Spare part-nr. 43411000)
- 2: Screw dia. 4x52 mm (Spare part-nr. 43093000)
- 3: Shaft (Spare part-nr. 43049000)
- 4: Mixing ring (Spare part-nr. 43096P00)
- 4.1: Cap (Spare part-nr. 43410000)
- 5: Electronic (Spare part-nr. 43673000)
- 6: Magnetic coil (Spare part-nr. 43635000)
- 6.1: Screw (Spare part-nr. 4308600M)
- 6.2: Membrane (Spare part-nr. 43737000)
- 7: Flow straightener (Spare part-nr. 43298000)
- 8: Cover (Spare part-nr. 43249000)
- 9: Cartridge (Spare part-nr. 43460000)
- 10: Fixing set (Spare part-nr. 43039000)
- 11: Cable (Spare part-nr. 43698000)
- 12: Hose 370 mm (Spare part-nr. 43366000)
- 13: Hose warm 500 mm (Spare part-nr. 43368000)
- 14: Hose cold 500 mm (Spare part-nr. 43367000)
- 15: Power supply (Spare part-nr. 43671000)
- 16: Power supply line (Spare part-nr. 43700000)
- 17: Support panel (Spare part-nr. 43184000)