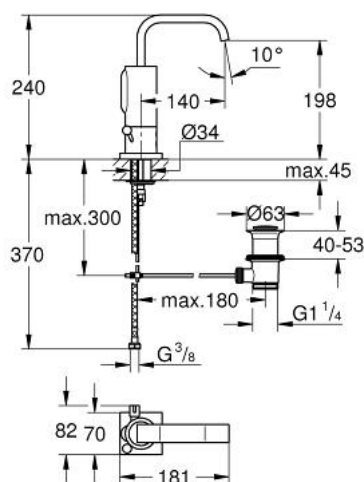


36 234 000 ALLURE E INFRA-RED ELECTRONIC BASIN MIXER 1/2" WITH MIXING DEVICE, ADJUSTABLE TEMPERATURE LIMITER AND WASTE SET

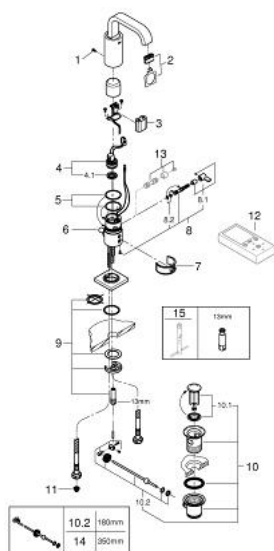


PRODUCT DESCRIPTION

- Colour: chrome
- single hole installation
- 6V lithium battery, type CR-P2
- GROHE Long-Life finish
- GROHE Water Saving 6.0 l/min flow limiter
- U spout
- integrated mousseur
- solenoid valve integrated in housing
- pop-up waste set 1 1/4"
- flexible connection hoses
- dirt strainers
- rapid-installation-system
- multistage battery status display
- automatic safety stop 60 sec.(factory pre-set)
- additional functions and precise settings by remote control 36 407
- automatic flushing after 1 or 3 days without use
- Thermal disinfection for 3,5 or 11 min
- CE approved
- noise classification 1 in accordance with DIN4109
- type of protection faucet IP 59K



36 234 000 ALLURE E INFRA-RED ELECTRONIC BASIN MIXER 1/2" WITH MIXING DEVICE, ADJUSTABLE TEMPERATURE LIMITER AND WASTE SET



SPARE PARTS, Juni 2016 – now

- 1: Screw (Spare part-nr. 4283100M)
- 2: Mousseur (Spare part-nr. 13220000)
- 3: Battery (Spare part-nr. 42886000)
- 4: Solenoid valve (Spare part-nr. 42229000)
- 4.1: Dirt Strainer (Spare part-nr. 42798000)
- 5: Seat washer (Spare part-nr. 4283600M)
- 6: Pop-up rod (Spare part-nr. 42707000)
- 7: Cleaning clip (Spare part-nr. 42837000)
- 8: Lever (Spare part-nr. 42363000)
- 8.1: Mixing lever (Spare part-nr. 42364000)
- 8.2: Seat washer (Spare part-nr. 4284000M)
- 9: Fixing set (Spare part-nr. 42841000)
- 10: Pop-up waste set 1 1/4" (Spare part-nr. 28910000)
- 10.1: Plug (Spare part-nr. 07182000)
- 10.2: Eccentric rod (Spare part-nr. 07052000)
- 11: Filter (Spare part-nr. 4241300M)
- 12: Remote control for all GROHE infra-red products (Spare part-nr. 36407000)*
- 13: Security cover cap (Spare part-nr. 36209000)*
- 14: Eccentric rod (Spare part-nr. 07341000)*
- 15: Mounting wrench (Spare part-nr. 19017000)*

* Optional accessories