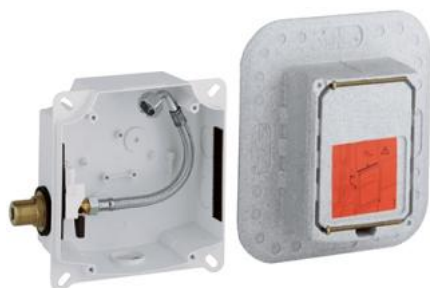
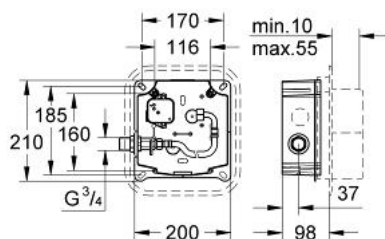


36 241 000 EUROPLUS E CONCEALED MOUNTING BOX



PRODUCT DESCRIPTION

- for installation with pre-mixed or cold water
- wall installation
- suitable to IR-sets for final installation
- 36 242
- 36 243
- isolating valve
- flexible connection-/flush hose
- GROHE Water Saving - Less water, perfect flow
- 230 V connecting plug
- for cold or premixed water



36 241 000 EUROPLUS E CONCEALED MOUNTING BOX

SPARE PARTS, Januari 2001 – spareParts.validDate.now

- 1: Supply stop for warm water (Order-nr. 42116000)
- 2: Dirt Strainer (Order-nr. 4212400M)
- 3: Tube (Order-nr. 42117000)
- 3.1: Fibre seal dia. 12x2 mm (Order-nr. 0138900M)
- 4: Self anchoring coupling 230 V (Order-nr. 42732000)
- 5: Fixing set (Order-nr. 4352800M)

