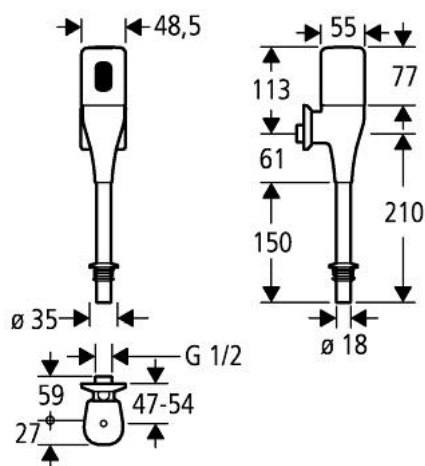


37 008 000 INFRA-RED ELECTRONIC FOR URINAL

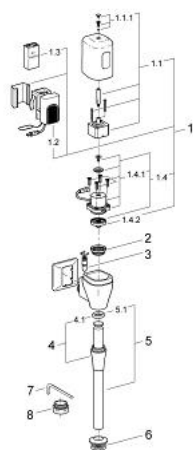


PRODUCT DESCRIPTION

- Colour: chrome
- ½"
- 9 V DC battery supply
- CE approved
- compact fitting
- made of brass
- for urinal bowls with inlet from top
- infra-red control
- battery check lamps
- adjustable flow time from 1 - 10 sec
- solenoid valve
- with integrated stop valve, flush pipe Ø 15 x 300 mm and rubber connector
- exposed installation
- GROHE Long-Life finish



37 008 000 INFRA-RED ELECTRONIC FOR URINAL



SPARE PARTS, Januari 1995 – now

- 1: Replace kit (Spare part-nr. 42874000)
- 1.1: Upper part of housing (Spare part-nr. 43254000)
- 1.1.1: Screw dia. 4x52 mm (Spare part-nr. 43098000)
- 1.2: Electronic (Spare part-nr. 43675000)
- 1.3: Battery (Spare part-nr. 43823000)
- 1.4: Solenoid valve (Spare part-nr. 43841000)
- 1.4.1: Headpart f. solenoid valve (Spare part-nr. 43695000)
- 1.4.2: Membrane (Spare part-nr. 43795000)
- 2: Dirt strainer (Spare part-nr. 43826000)
- 3: Isolating valve (Spare part-nr. 43414000)
- 4: Nut (Spare part-nr. 43304000)
- 4.1: Ball seal dia. 9x6.8 mm (Spare part-nr. 4377100M)
- 5: Urinal flush pipe (Spare part-nr. 37010000)
- 5.1: Ball seal dia. 9x6.8 mm (Spare part-nr. 4377100M)
- 6: Adapter for urinal (Spare part-nr. 43818000)
- 7: Key (Spare part-nr. 43784000)
- 8: Fixing nut (Spare part-nr. 43310000)