

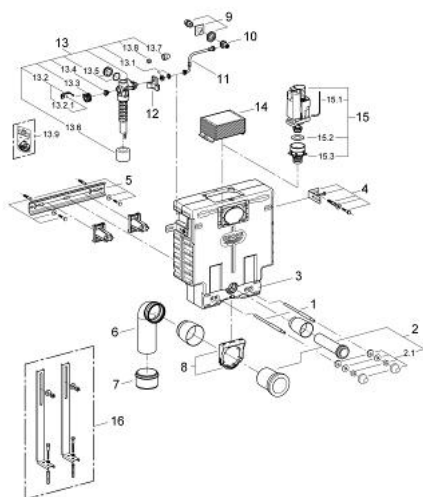
38 415 000 UNISET FOR WC



PRODUCT DESCRIPTION

- with flushing cistern 6 - 9 l
- 0.82 m installation height
- front or top actuation
- sound-insulating EPS module for masonry-in
- rail adaptors for modular fixing
- for single or rail installation
- wall rail with fixing accessories for single installation
- 2 WC fixing bolts
- distance of fixing bolts 180/230 mm
- fixing device for ceramic
- outlet bend \varnothing 80 mm
- depth adjustable
- inlet and outlet connecting set
- flushing cistern 6 - 9 l
- pneumatic discharge valve offering 3 modes of operation: dual flush or start/stop or single flush
- water supply from left/right or top
- low noise (group I acc. to German Noise Specification)
- insulated against condensation
- $\frac{1}{2}$ " water supply connection
- angle valve $\frac{1}{2}$ "
- inspection shaft with protecting block
- without wall plate/actuation
- GROHE Water Saving - Less water, perfect flow

38 415 000 UNISET FOR WC



SPARE PARTS, April 2008 – now

- 1: Threaded bolt (Spare part-nr. 4276400M)
- 2: WC inlet and outlet connecting set (Spare part-nr. 37311K00)
- 2.1: Basin fastening (Spare part-nr. 43511SH0)
- 2.2: Connector (Spare part-nr. 37119000)
- 3: Cap (Spare part-nr. 43915000)
- 4: Fastening set, complete, 2 pcs. (Spare part-nr. 4276300M)
- 5: Rail (Spare part-nr. 43931000)
- 6: PP-outlet bend Ø 90 mm (Spare part-nr. 42327000)
- 7: 4" Outlet Adaptor F Rapid SI (Spare part-nr. 42242000)
- 8: Support for outlet bend (Spare part-nr. 42243000)
- 9: Water supply (Spare part-nr. 42234000)
- 10: Service valve (Spare part-nr. 42235000)
- 11: Overflow Sleeve (Spare part-nr. 43325000)
- 11.1: Seat washer (Spare part-nr. 0319100M)
- 12: Support device (Spare part-nr. 42195000)
- 13: Filling valve (Spare part-nr. 37095000)
- 13.1: Lever (Spare part-nr. 43734000)
- 13.1.1: Ball seal dia. 9x6.8 mm (Spare part-nr. 4377000M)
- 13.2: Valve head (Spare part-nr. 43536000)
- 13.3: Membrane (Spare part-nr. 4375800M)
- 13.4: Screw cap (Spare part-nr. 43735000)
- 13.5: Valve float, 5 pcs. (Spare part-nr. 4379100M)
- 13.6: Repl. kit f. seal (Spare part-nr. 43722000)*
- 14: inspection shaft.for flushing cistern (Spare part-nr. 42326000)
- 15: Discharge valve AV1 complete (Spare part-nr. 42314000)
- 15.1: pneumatic hose (Spare part-nr. 42319000)
- 15.2: Ball seal dia. 9x6.8 mm (Spare part-nr. 42310000)
- 15.3: Valve seat for GD2 (Spare part-nr. 42315000)
- 16: Support feet (Spare part-nr. 37304000)*

* Optional accessories