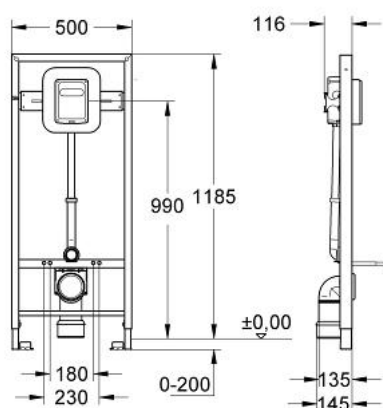


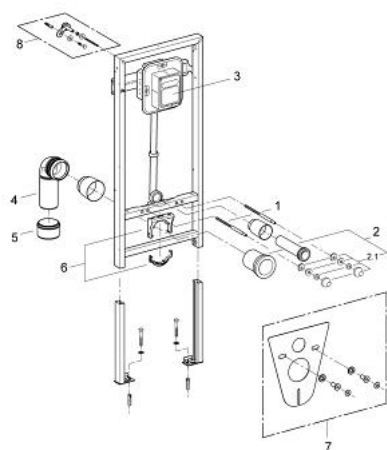
38 519 000 **RAPID SL** **FOR WALL-HUNG WC**



PRODUCT DESCRIPTION

- with flush valve 6 - 9 l
- for manual / electronic actuation
- 1.20 m installation height
- for on-the-wall installations or studded walls
- steel frame with foil coating/hot galvanized, self-supporting
- for dry-cladding, completely pre-assembled
- quick adjustment, lockable
- fixing material
- TÜV approved
- 2 WC fixing bolts
- distance of fixing bolts 180/230 mm
- outlet bend \varnothing 80 mm
- depth adjustable
- reducer \varnothing 80/100 mm
- inlet and outlet connecting set
- manual/electronic actuation
- adjustable
- low noise (group I acc. to German Noise Specification)
- $\frac{3}{4}$ "
- stop valve
- 6 - 9 l adjustable
- flush bend
- flow rate adjustment
- without accessories for on-the-wall installation
- without wall plate/actuation
- GROHE Water Saving - Less water, perfect flow

38 519 000 **RAPID SL** **FOR WALL-HUNG WC**



SPARE PARTS, April 2008 – now

- 1: Threaded bolt (Spare part-nr. 4276400M)
- 2: WC inlet and outlet connecting set (Spare part-nr. 37311K00)
- 2.1: Basin fastening (Spare part-nr. 43511SH0)
- 2.2: Connector (Spare part-nr. 37119000)
- 3: Flush valve for WC (Spare part-nr. 37153000)
- 4: PP-outlet bend Ø 90 mm (Spare part-nr. 42327000)
- 5: 4" Outlet Adaptor F Rapid Sl (Spare part-nr. 42242000)
- 6: Support for outlet bend (Spare part-nr. 42243000)
- 7: Set for noise protection (Spare part-nr. 37131000)*
- 8: Wall union (Spare part-nr. 3855800M)*

* Optional accessories